

## Revision Record

Date	Version	Revision
8/19/2025	0.0.0.20	1. Supports SMB and NTP functions.
		2. Optimized noise after AZ is enabled.
		3. Optimized noise after 100PLC is enabled.
		4. Supports saving readings, statistics, and histograms in the scanner card function.
		5. Supports relative value settings, statistics, and histograms in the dual display function.
		6. Bug fixes
		a) System crashes when entering the wrong password during recalibration.
		b) Statistics occasionally show 0 in math.
		c) Fixed an issue where overload values were recorded during probe-hold.
		d) The digitizer would freeze at certain sampling rates and readings.
		e) Device malfunctions occurred when using the scanner card's universal remote control command function.
		f) File path errors when browsing when holding readings.
		g) Selecting uA in current mode did not work.
3/20/2025	0.0.0.18	1. Optimized response speed under remote control.
		2. Optimized the AC RMS digital path to support PWM signal testing.
		3. Optimized the DC auto-ranging algorithm, support unipolar PWM signal testing under DC.
		4. Bug fixes
		a) Incorrect measurement values with 0.1/0.01 PLC setting under 4-wire resistance measurement.
		b) Incorrect readings with the 100M range setting when auto-zeroing is enabled under resistance measurement.
		c) Incorrect range display when entering the digitizer under auto-ranging.
		d) Incorrect preset range after card scanning is enabled.
		e) Occasional "digitizer completed" error when switching sampling modes.
		f) Crash when loading files under sensor mode.
		g) File errors after secure erase and power-on mode changes.
		h) Incorrect cursor position on the digitizer.
		i) Incorrect auto-zeroing when auto-ranging is enabled for 4-wire resistance measurement.
11/8/2024	0.0.0.13	1. Resolved data acquisition anomalies on digitizers and recorders.
		2. Bug fixes
		a) Unusual level trigger conditions on digitizers.
		b) An abnormal OVERLOAD occurred during frequency testing.

Date	Version	Revision
		c) No waveform appeared on a trend chart of recorder. d) PT1000 sensor readings displayed incorrectly. e) Triggering stop error when a DC signal was input during frequency/period testing.
6/26/2024	0.0.0.11	1 <sup>st</sup> release.

---

## Version Compatibility

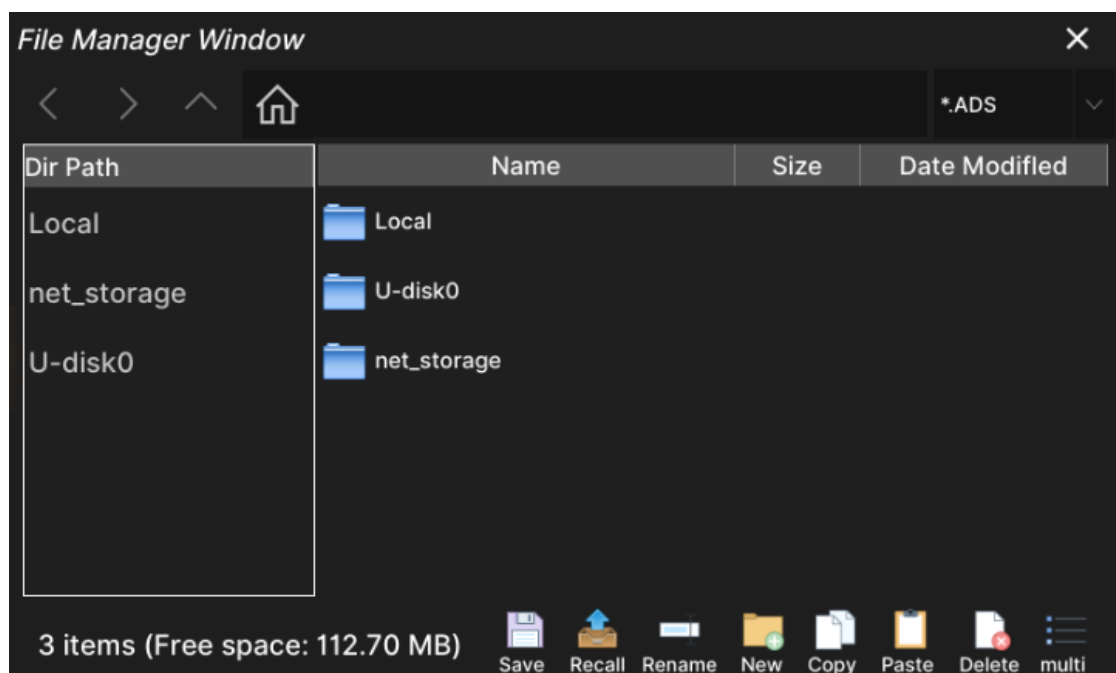
Source Version	Object Version	Compatibility
0.0.0.18	0.0.0.20	Tested
0.0.0.17	0.0.0.18	Tested
0.0.0.13	0.0.0.17	Tested
0.0.0.11	0.0.0.13	Tested

## Upgrade Instructions

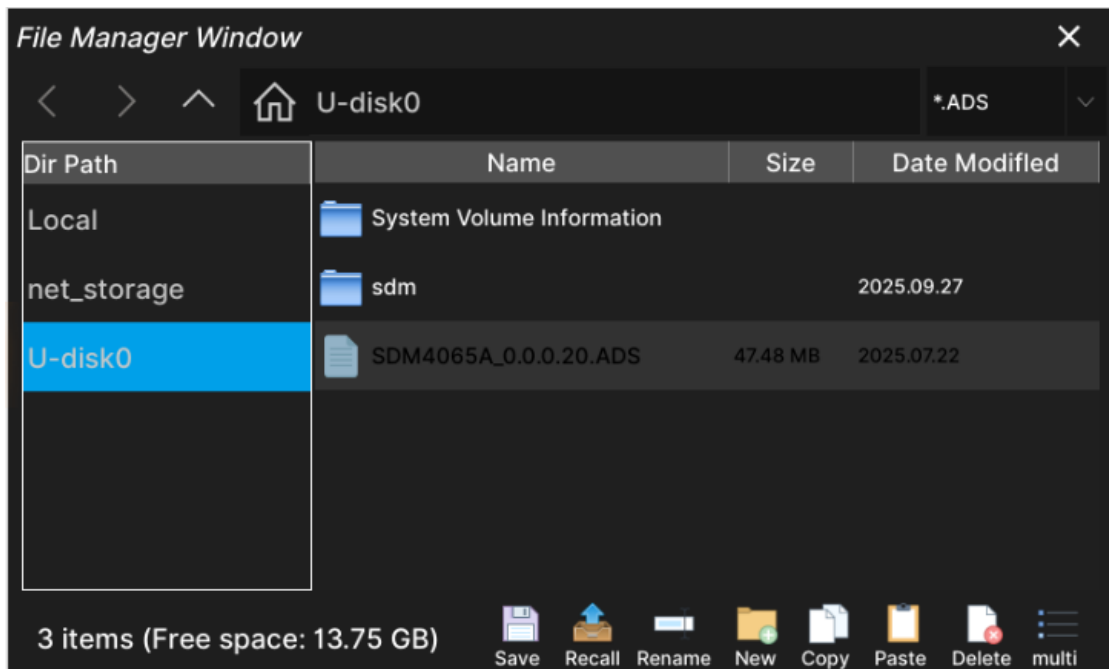
### Upgrade from a U-disk (USB Memory device)

**WARNING: DO NOT shut off the instrument until the update is completed.**

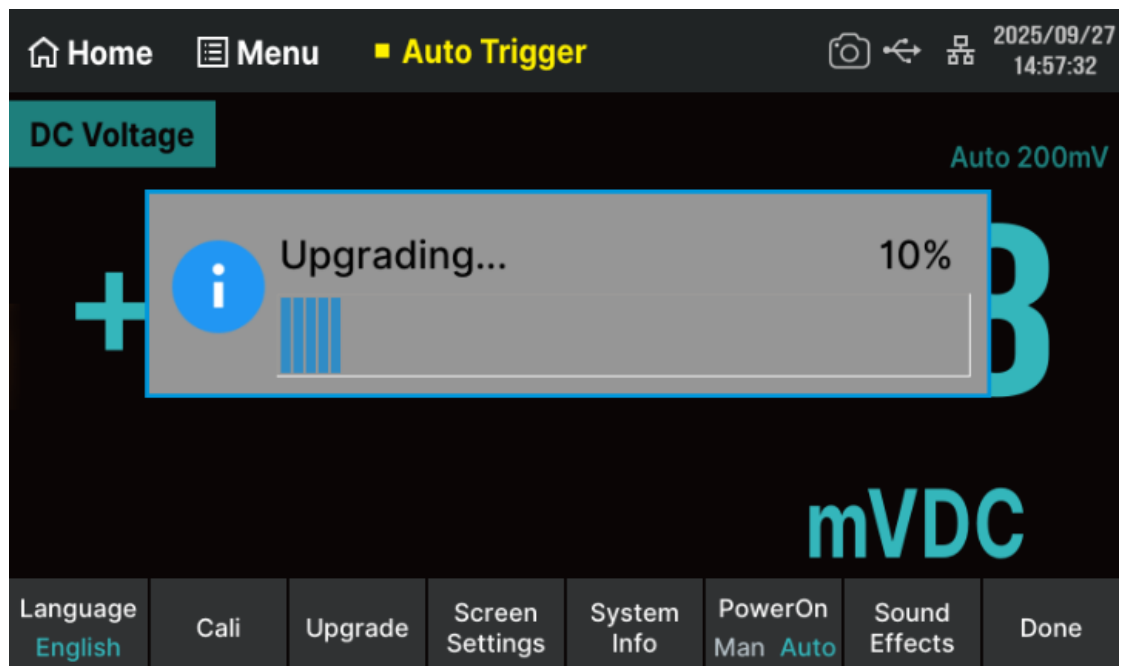
1. Copy the update file (\*.ads) to a FLASH type U-disk, and then insert the U-disk into one of the USB host ports of the instrument.
2. Perform " *Utility* -> *System Setup* -> *Upgrade*". The following the file manager should pop up and allow you to select the upgrade file.



3. Select the correct path and firmware on file manager.



4. Click the recall icon  in the interface above and the upgrade dialog appears.






5. The SDM would reboot while the upgrade process is completed. The upgrade was finished.
6. After the instrument reboots, check the version number through the steps **Utility** -> **System Setup** -> **System Info** to confirm if the upgrade is successful.

Home

Menu

Auto Trigger

2025/09/27  
15:00:00

System information:

Instrument name: SDM4065A

Software version: 0.0.0.20

Series number: SDM46A0C900028

FPGA version: 2025-07-19-19

ID: 3400001dcc98c201

Hardware version: 00-01-00-02

BKF version: 05-02-5.08

Startup times: 171

Copyrights

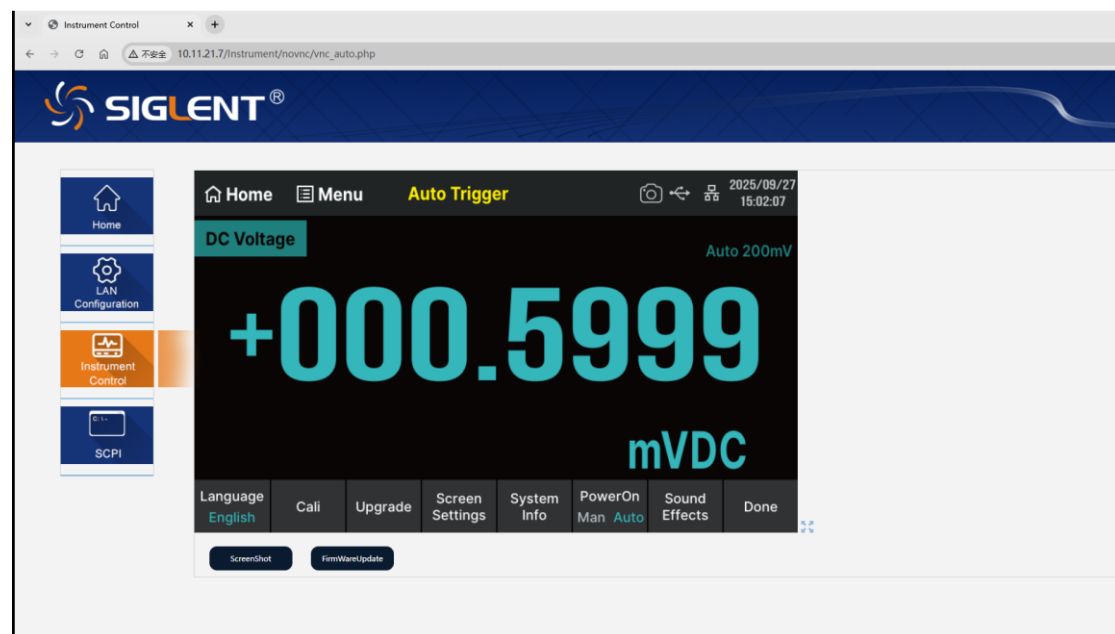
Developer Mode

Return

**WARNING: DO NOT** shut off the instrument until the update is completed.

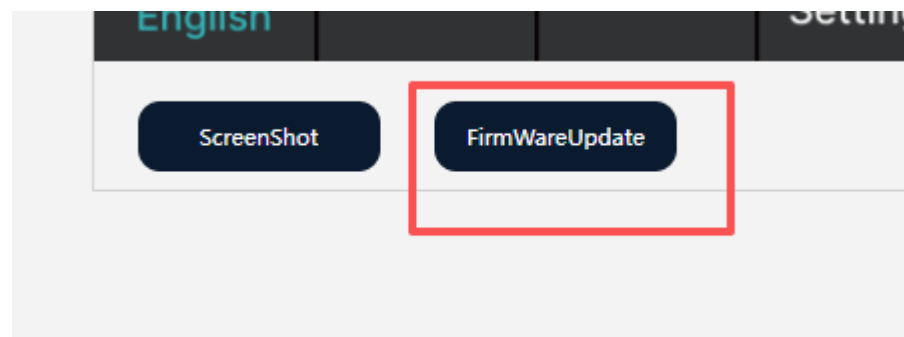
## Upgrade from the Web Server

A built-in web server provides an approach to control the instrument by web browser. This process doesn't require any additional software to be installed on the controlling computer. Set the LAN port correctly (see the User Manual for details), input the IP address of the instrument in the browser address bar, and then the user can browse and control the instrument on the web.



**WARNING: DO NOT shut off the instrument until the update is completed.**

1. Click the "FirmwareUpdate" button in the web interface



2. Select the correct update file (\*.ads) stored on the computer. The instrument will automatically download the update file and perform the upgrade once the file is specified.

3. Wait for the upgrade complete, the specific response of the device is consistent with the above USB disk operation.

**WARNING: DO NOT shut off the instrument until the update is completed.**